

Accessibility  
Map

English



Van  
Gogh  
Museum

Amsterdam

## Welcome to the Van Gogh Museum

Here you will learn everything there is to know about Vincent van Gogh and his contemporaries. The museum is accessible to everybody. All floors are easy to reach using the lift, there are multiple disabled toilets and baby changing rooms, and wheelchairs, wheeled walkers and prams are available at the museum.



### Information Desk

The Information Desk in the Entrance Hall has all the information you need on our activities, lectures, tours, treasure hunts, schools programme, exhibitions and the artworks in the museum collection. Our staff will be happy to help you.

### Activities

The Van Gogh Museum offers a range of activities for disabled visitors.

### *Feeling Van Gogh*

Several times a year, the Van Gogh Museum offers a special programme for visually-impaired visitors: Feeling Van Gogh. Together with a companion or sighted family member or friend, participants are invited to use their sense of touch and smell to discover Vincent van Gogh's paintings. Please inquire at the Information Desk regarding the dates of upcoming editions. If you are unable to participate in an edition of Feeling Van Gogh, be sure to visit the Feeling Van Gogh wall in the Main Building.

### *Sign language guided tours*

Looking for a guided tour in sign language? Several times a year, the Van Gogh Museum organises a free guided tour especially for deaf visitors and visitors who are hard of hearing. These tours are in Dutch sign language or International Sign. Please enquire at the Information Desk regarding the dates of upcoming sign language guided tours.

### *Introductory film*

A film introducing the life and work of Vincent van Gogh is screened in the auditorium. A loop system is present for visitors who are hard of hearing.



### Museum Shops

Visitors using a wheelchair are advised to visit the museum shops on -1 and the ground floor. The bookshop on the third floor is also accessible for wheelchairs.



### Museum Café Le Tambourin

Located on the ground floor of the Main Building, Le Tambourin offers a varied selection of freshly-prepared hot and cold meals, drinks, salads and pastries.

### Would you like to become our Friend?

Support the museum's activities by becoming Vincent's Friend. View the options at [www.vangoghmuseum.com/become-a-friend](http://www.vangoghmuseum.com/become-a-friend)

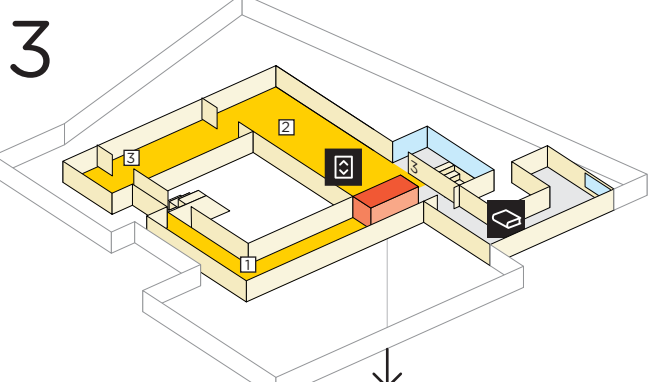
You can also follow us on:



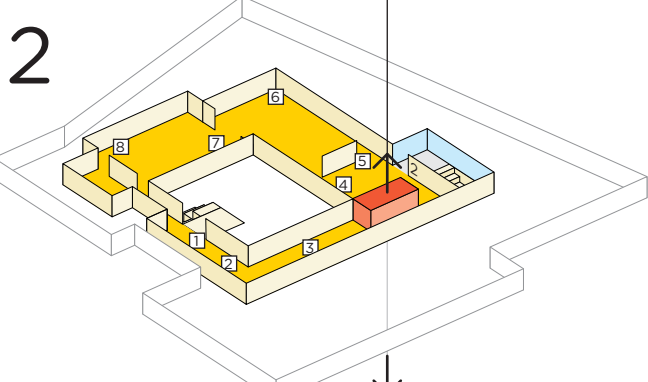
Head to [www.vangoghmuseum.com](http://www.vangoghmuseum.com) for all the latest about our exhibitions and activities, works in the permanent collection, opening hours, admission prices and accessibility.



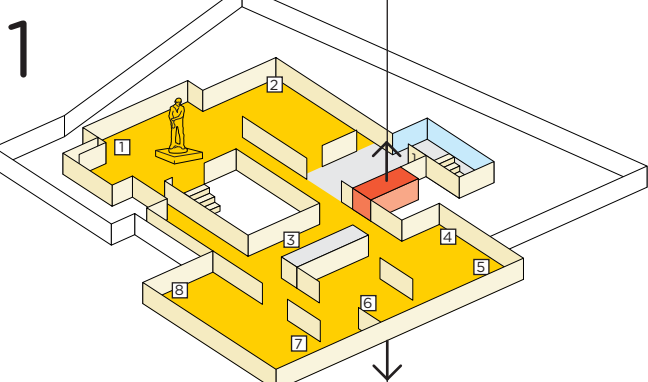
# Main Building



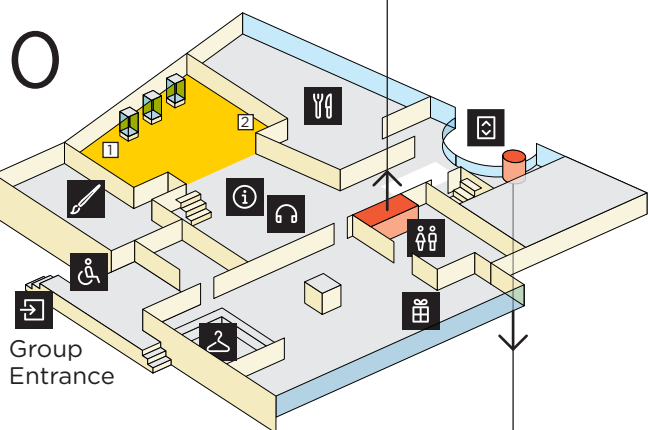
- 1 Painting against All Odds
- 2 Impassioned Nature
- 3 Van Gogh Inspires



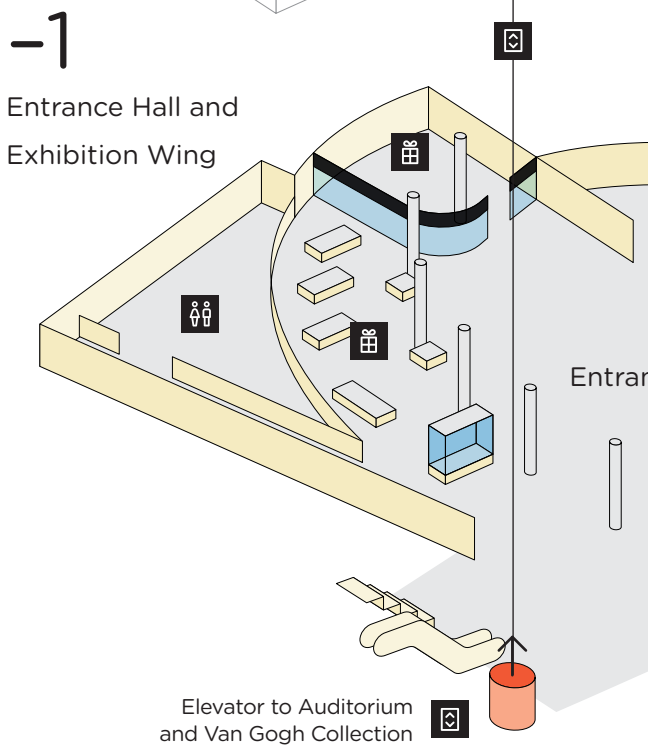
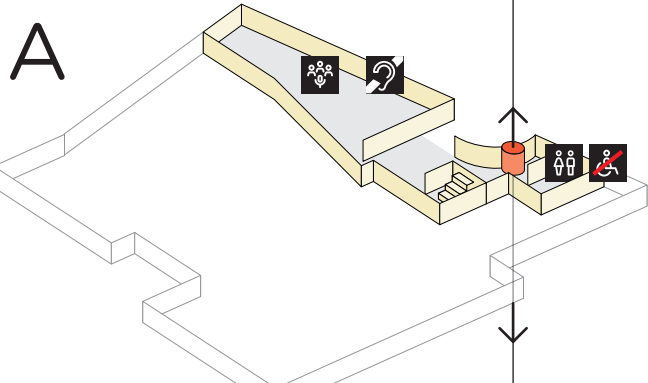
- 1 A Life in Letters
- 2 Family Treasures
- 3 Family
- 4 Artistic Exchange
- 5 Friends
- 6 Friends in Pont-Aven
- 7 Van Gogh at Work
- 8 Van Gogh - Draughtsman



- 1 Van Gogh's Models
- 2 Painter of Peasant Life
- 3 Back to Basics
- 4 New Perspectives
- 5 Modern Art in Paris
- 6 Artist Friends
- 7 Artistic Flourishing
- 8 Dreaming of Japan



- 1 Self-portraits
- 2 Timeline

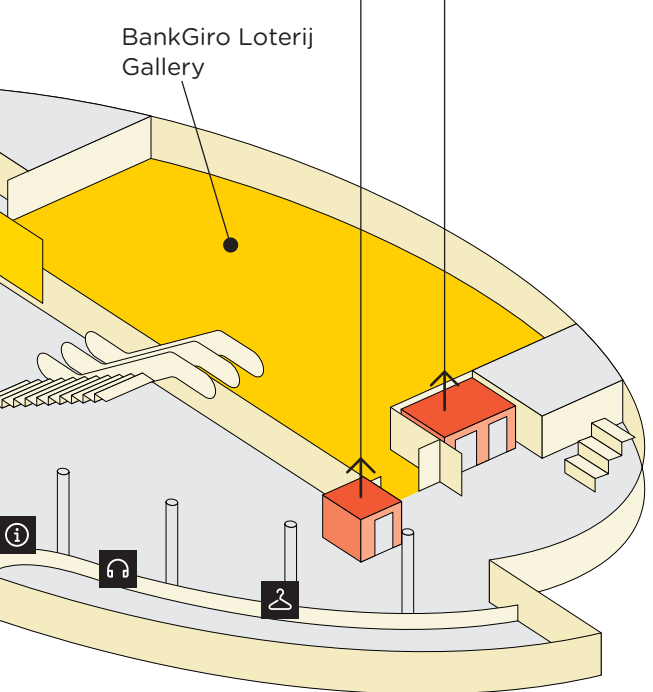
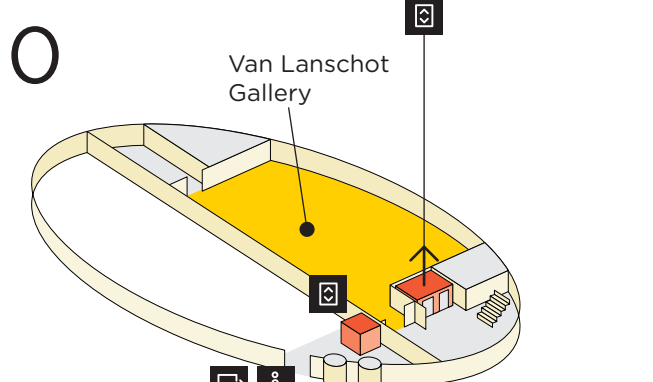
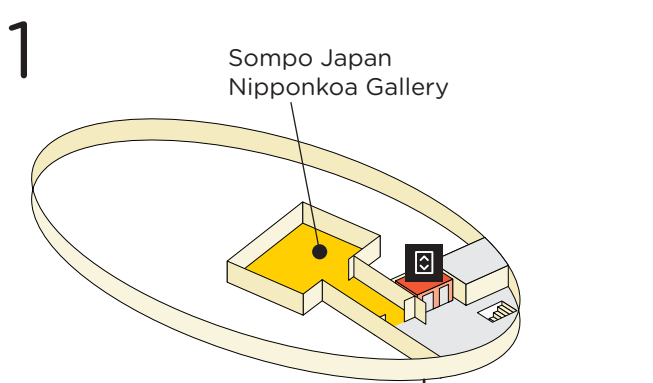


Elevator to Auditorium and Van Gogh Collection

# Key

- Exhibition
- Other spaces
- 
- 
- 
- 
- 
- 
- 
- 
- 
- 
- 
- 
- 
- 
- 
- 

# Exhibition Wing



**Welcome to the Van Gogh Museum**  
 The museum consists of two buildings: the Main Building and the Exhibition Wing. They are connected by the glass Entrance Hall.  
 The Main Building houses the museum's permanent collection, which features works by Van Gogh and his contemporaries. The Exhibition Wing hosts our temporary exhibitions.  
 The Van Gogh Museum is open 365 days a year.

**House rules**  
  
 The Van Gogh Museum is dedicated to ensuring the well-being and safety of our staff, visitors and collection at all times. We therefore kindly request that you refrain from making telephone calls or recordings, and that you do not take umbrellas, liquids or food with you into the museum.